



US 20040152390A1

(19) **United States**(12) **Patent Application Publication** (10) **Pub. No.: US 2004/0152390 A1**
(43) **Pub. Date:** **Aug. 5, 2004**
Chung et al.(54) **ORGANIC ELECTRO-LUMINESCENT
DISPLAY AND METHOD OF SEALING THE
SAME**(30) **Foreign Application Priority Data**

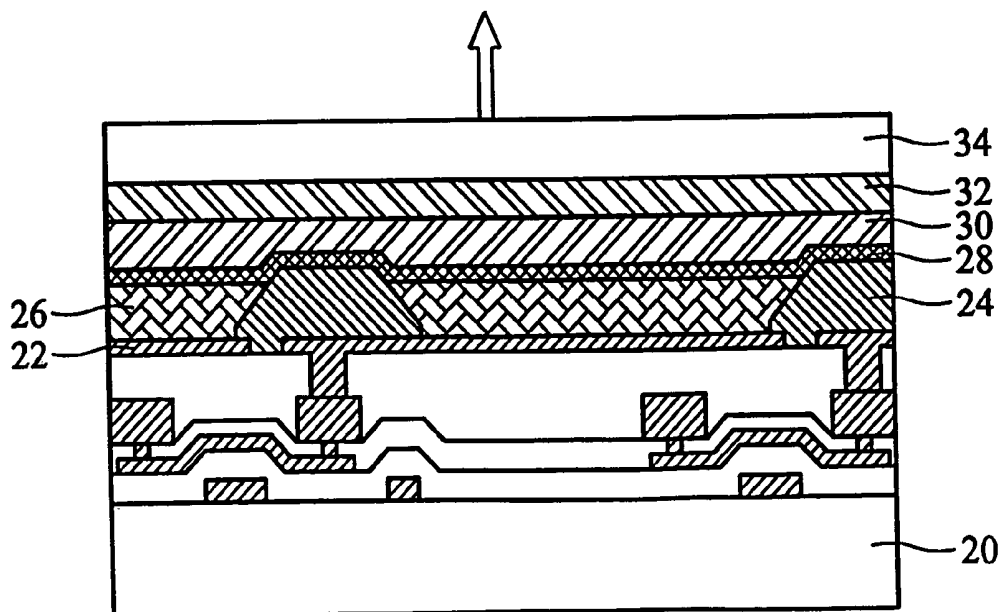
Oct. 17, 2001 (TW)..... 90125665

(75) Inventors: **Chia-Tin Chung**, Miaoli (TW); **Hao
Jung Huang**, Changhua Hsien (TW);
Chen Wei Huang, Tainan (TW)**Publication Classification**(51) **Int. Cl.⁷** **H01J 9/00**(52) **U.S. Cl.** **445/24**

Correspondence Address:

MERCHANT & GOULD PC**P.O. BOX 2903****MINNEAPOLIS, MN 55402-0903 (US)**(57) **ABSTRACT**(73) Assignee: **CHI MEI OPTOELECTRONICS
CORPORATION**, Tainan County (TW)(21) Appl. No.: **10/760,862**(22) Filed: **Jan. 20, 2004****Related U.S. Application Data**(62) Division of application No. 09/995,447, filed on Nov.
27, 2001.

A top-emission organic electro-luminescent display (OLED) has a substrate with at least a anode layer, an organic fluorescent film, at least a cathode layer, a barrier layer and a protection layer. A transparent sealing structure is glued to the top of the substrate. Wherein, the transparent sealing structure has an adhesion layer glued to the protection layer, a plurality of organic resin layers formed on the adhesion layer, a plurality of inorganic barrier layers disposed between the organic resin layers, a flexible polymer film formed on the organic resin layer, and a hard coat formed on the flexible polymer film.



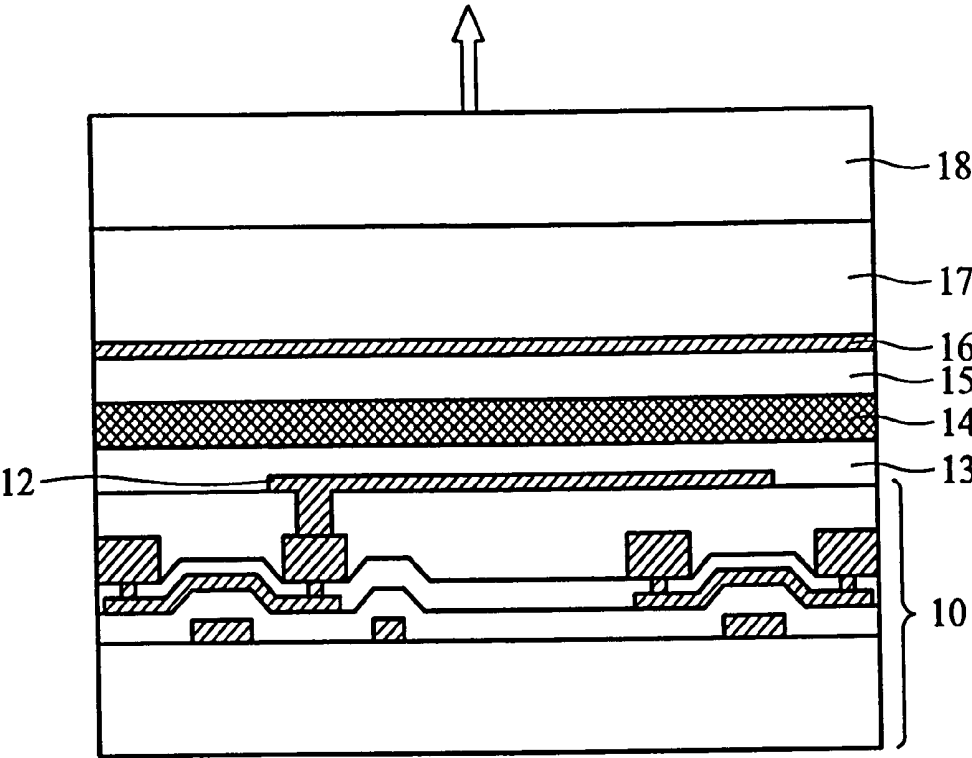


FIG. 1 (PRIOR ART)

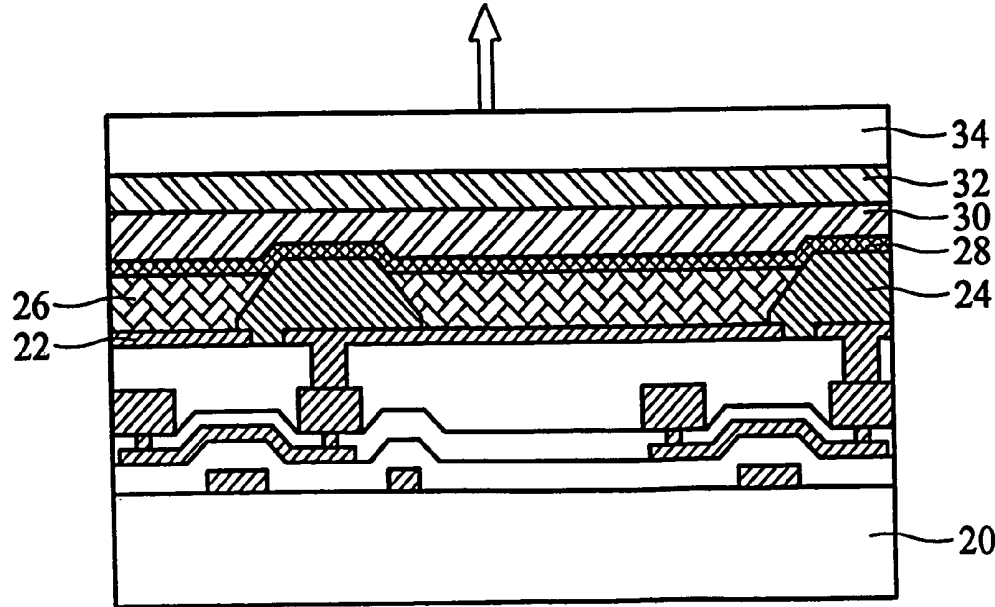


FIG. 2

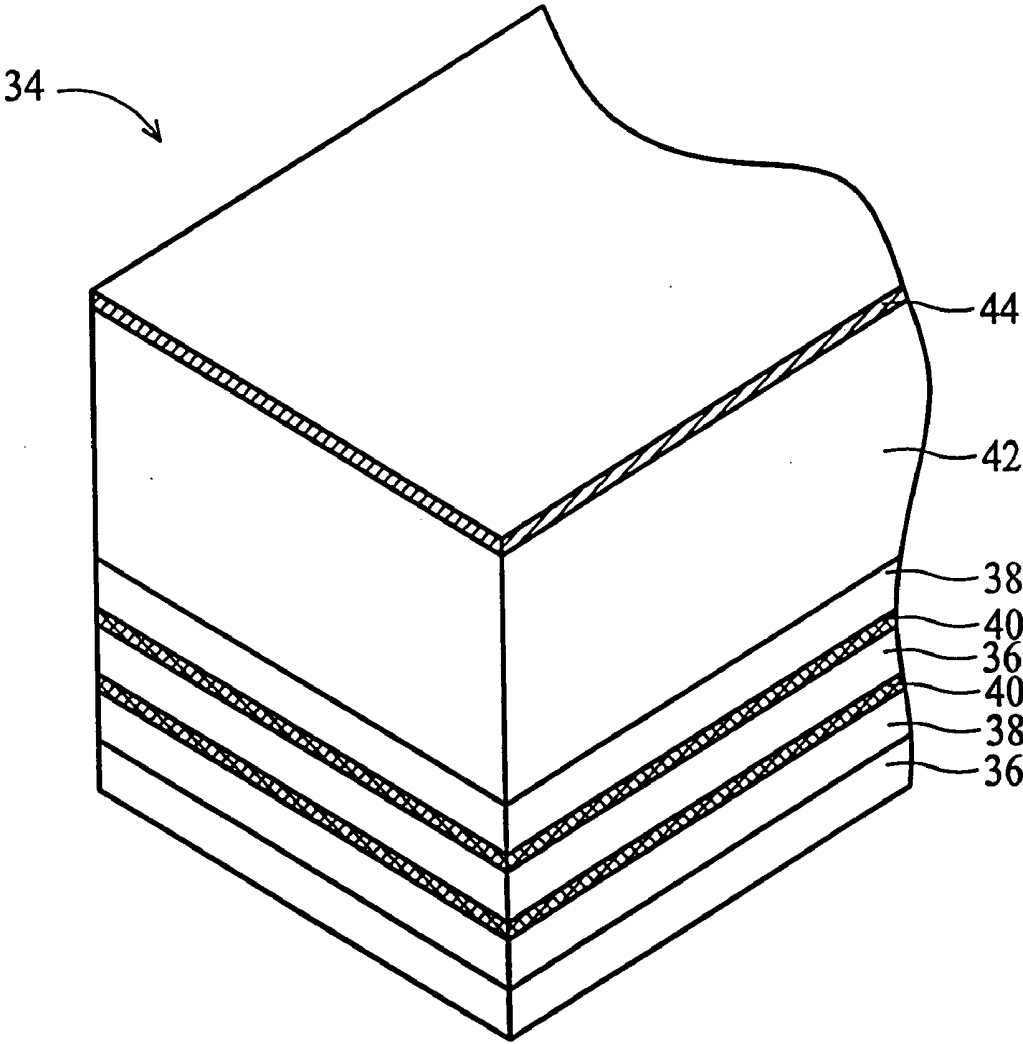


FIG. 3

ORGANIC ELECTRO-LUMINESCENT DISPLAY AND METHOD OF SEALING THE SAME

BACKGROUND OF THE INVENTION

[0001] 1. Field of the Invention

[0002] The present invention relates to an organic electro-luminescent display (OLED) and a method of forming the same and, more particularly, to a top-emission OLED and a method of sealing the same.

[0003] 2. Description of the Related Art

[0004] In the new generation of flat panel techniques, organic electro-luminescent display (OLED) has advantages of self-luminescence, wide-view angle, thin profile, lightweight, low driving voltage and simple process. In OLEDs with a laminated structure, organic compounds such as dyes, polymers, or other luminescent materials serve as an organic luminescent layer and are disposed between cathode and anode. In accordance with the driving mode, OLED is classified into passive matrix and active matrix types. Alternatively, in accordance with the luminescent path, OLED is classified into a bottom-emission OLED and a top-emission OLED. Conventionally, both of the passive and active matrix types are fabricated as the bottom-emission OLED in which glass material is used to form the luminescent faceplate and transparent conductive material is used to form the anode layer. Thus, when electrons and holes are combined as excitons in the organic luminescent layer, light radiates from the transparent faceplate. However, since the luminescent regions of the R, G and B are different within each pixel area, TFT structures in array have different sizes and thus reduce the aperture ratio of the bottom-emission OLED.

[0005] In order to increase the aperture ratio, a top-emission OLED is developed in which the cathode layer is transparent materials and a transparent faceplate is sealed on the top of the OLED. FIG. 1 is a sectional diagram showing a conventional top-emission OLED. The top-emission OLED 10 has TFT devices and circuit devices completed in the substrate 10. On the substrate 10, a lengthwise-extending anode layer 12, an organic electron-hole transmitting layer 13, an organic fluorescent film 14, an organic electron transport layer 15, a transversely-extending cathode layer 16, a barrier layer 17 and a transparent faceplate 18 are successively formed. When avoltage is applied to the top-emission OLED, electrons and holes are relatively removed to the organic fluorescent film 14 to radiate light from the transparent faceplate 18. The direction of radiation is shown as the arrow. Therefore, the size of the TFT device does not affect the luminescent faceplate 18, and the materials of the substrate 10 can be selected from glass, silicon, ceramic materials, or plastic materials.

[0006] However, as the duration of use increases, the probability of moisture and oxygen permeating the OLED also increases, causing detachment between the organic luminescent layer 14 and the cathode electrode 16, cracking of the organic materials, and oxidation of the electrodes. As a result, a so-called "dark spot", to which electricity is not supplied, is generated, decreasing luminescence and luminescent uniformity. Accordingly, in conventionally sealing the top of the top-emission OLED, one method uses a glass plate to isolate moisture/oxygen from the outer environment, but the glass plate with large volume and weight does not fit

the requirements of the OLED. The other method coats a UV-curing resin on the top of the top-emission OLED to provide a transparent result, but the resin with outgassing phenomenon and poor resistance to moisture cannot assure the luminescent property of the OLED. Thus, a novel sealing structure of the top-emission OLED solving the aforementioned problems is called for.

SUMMARY OF THE INVENTION

[0007] The present invention provides a top-emission OLED and a method of sealing the same to increase aperture ratio and resistance to moisture.

[0008] The top-emission organic electro-luminescent display (OLED) has a substrate with at least a lengthwise-extending anode layer, an organic fluorescent film, at least a transversely-extending cathode layer, a barrier layer and a protection layer. A transparent sealing structure is glued to the top of the substrate. The transparent sealing structure has an adhesion layer glued to the protection layer, a plurality of organic resin layers formed on the adhesion layer, a plurality of inorganic barrier layers disposed between the organic resin layers, a flexible polymer film formed on the organic resin layer, and a hard coat formed on the flexible polymer film.

[0009] Accordingly, it is a principle object of the invention to provide the inorganic barrier layer to achieve a good resistance to moisture/oxygen.

[0010] It is another object of the invention to provide the organic resin layer to decrease the internal stress generated by the organic barrier layer and assure the planarization of the sealing structure.

[0011] Yet another object of the invention is to provide the hard coat to obstruct the permeation/pollution of moisture, oxygen and impurities.

[0012] It is a further object of the invention to provide the sealing structure to achieve good planarization, excellent resistance to moisture and sufficient transparency.

[0013] Still another object of the invention is to provide the sealing structure to promote the luminescent property and lifetime of the top-emission OLED.

[0014] Another object of the invention is to provide the sealing structure to achieve commercial requirements of the top-emission OLED, such as light weight and thin type.

[0015] These and other objects of the present invention will become readily apparent upon further review of the following specification and drawings.

BRIEF DESCRIPTION OF THE DRAWINGS

[0016] FIG. 1 is a sectional diagram showing a conventional top-emission OLED.

[0017] FIG. 2 is a sectional diagram showing a top-emission OLED according to the present invention.

[0018] FIG. 3 is a schematic diagram showing the transparent sealing structure according to the present invention.

[0019] Similar reference characters denote corresponding features consistently throughout the attached drawings.

DETAILED DESCRIPTION OF THE PREFERRED EMBODIMENTS

[0020] The present invention provides a sealing structure of a top-emission OLED and a method of sealing the same, in which the top-emission OLED is applied to a passive matrix type or an active matrix type. In sealing the top-emission OLED, the sealing structure formed as laminated film is glued to the top of the top-emission OLED. This method is simple and the sealing structure provides a favorable aperture ratio and excellent resistance to moisture/oxygen.

[0021] FIG. 2 is a sectional diagram showing a top-emission OLED according to the present invention. The top-emission OLED has a plurality of TFT devices in array and circuit structures completed in a substrate 20. Also, according to the designed pattern of the pixel area, a plurality of lengthwise-extending anode layers 22, an organic fluorescent film 24, a plurality of ribs 24 for separating adjacent luminescent spaces, a plurality of transversely-extending cathode layers 28, a transparent barrier layer 30, a transparent protection layer 32 and a transparent sealing structure 34 are successively formed on the substrate 20.

[0022] The anode layer 22 and cathode layer 28 are formed using conductive materials with low resistance and low work function, wherein the work function is the required energy (eV) for driving charges. Also, since the cathode layer 28 needs to be transparent, transparent conductive materials are preferred for the use of the cathode layer 28. The transparent barrier layer 30 uses inorganic materials, such as SiO, SiO_x, SiO₂, and Si₃N₄, those are formed by plasma enhanced chemical vapor deposition (PECVD). The transparent protection layer 32 uses organic materials, such as resin by spin-on coating, resulting in a planarized surface.

[0023] FIG. 3 is a schematic diagram showing the transparent sealing structure 34 according to the present invention. The transparent sealing structure 34 comprises an adhesion layer 36, a plurality of organic resin layers 38, a plurality of inorganic barrier layers 40 respectively disposed between the organic resin layers 38, a flexible polymer film 42 and a hard coat 44. The adhesion layer 36 is selected from resin or any other transparent adhesion materials to provide adhesion between the sealing structure 34 and the protection layer 32. The inorganic barrier layer 40 is selected from transparent dielectrics, such as SiC, SiO₂, Si₃N₄, Al₂O₃ by PECVD to provide a good resistance to moisture/oxygen. The organic resin layer 38 is used to decrease the internal stress generated by the organic barrier layer 40 to assure the planarization of the sealing structure 34. The hard coat 44 may be a hardened coating, an anti-reflective coating or a ¼λ polarizer, for example, a laminated structure consisting of SiO₂, TiN and TiN/SiO₂. The hard coat 44 is employed to obstruct the permeation/pollution of moisture, oxygen and impurities. As a whole, the sealing structure 34 provides good planarization, excellent resistance to moisture and sufficient transparency to promote the luminescent property and lifetime of the top-emission OLED. Furthermore, the

sealing structure 34 achieves commercial requirements of the top-emission OLED, such as light weight and thin type.

[0024] In sealing the top-emission OLED, when the barrier layer 30 and the protection layer 32 are completed on the substrate 20, the adhesion layer 36 is coated at the bottom of the sealing structure 34 or coated on the top of the substrate 20. Then, using a roll-press manner, the sealing structure 34 is glued to the top of the top-emission OLED. This sealing method is simple to reduce process costs and increase throughput of the top-emission OLED.

[0025] It is to be understood that the present invention is not limited to the embodiments described above, but encompasses any and all embodiments within the scope of the following claims.

What is claimed is:

1. A top-emission organic electro-luminescent display (OLED) comprising:

a substrate having at least an anode layer, an organic fluorescent film, at least a cathode layer, a barrier layer and a protection layer; and

a transparent sealing structure glued to the top of the substrate;

wherein, the transparent sealing structure comprises an adhesion layer glued to the protection layer, a plurality of organic resin layers formed on the adhesion layer, a plurality of inorganic barrier layers disposed between the organic resin layers, a flexible polymer film formed on the organic resin layer, and a hard coat formed on the flexible polymer film.

2. The top-emission OLED according to claim 1, wherein the top-emission OLED is a passive matrix type.

3. The top-emission OLED according to claim 1, wherein the top-emission OLED is an active matrix type.

4. The top-emission OLED according to claim 1, wherein the cathode layer uses transparent conductive materials.

5. The top-emission OLED according to claim 1, wherein the barrier layer uses transparent inorganic materials.

6. The top-emission OLED according to claim 5, wherein the barrier layer is formed by plasma enhanced chemical vapor deposition (PECVD).

7. The top-emission OLED according to claim 1, wherein the protection layer uses transparent organic materials.

8. The top-emission OLED according to claim 1, wherein the inorganic barrier layer of the sealing structure is selected from one of the group consisting of SiC, SiO₂, Si₃N₄ and Al₂O₃.

9. The top-emission OLED according to claim 1, wherein the inorganic barrier layer of the sealing structure is formed by plasma enhanced chemical vapor deposition (PECVD).

10. The top-emission OLED according to claim 1, wherein the hard coat of the sealing structure is selected from one of the group consisting of hardened coating, anti-reflective coating, and ¼λ polarizer.

11. A method of sealing a top-emission organic electro-luminescent display (OLED), comprising steps of:

providing a substrate which has at least an anode layer, an organic fluorescent film, at least a cathode layer, a barrier layer and a protection layer; and

providing a transparent sealing structure which has a plurality of organic resin layers, a plurality of inorganic barrier layers disposed between the organic resin layers, a flexible polymer film formed on the organic resin layer, and a hard coat formed on the flexible polymer film; and

providing an adhesion layer to glue the bottom of the sealing structure to the protection layer of the substrate.

12. The method according to claim 11, wherein the adhesion layer is formed at the bottom of the sealing structure.

13. The method according to claim 11, wherein the adhesion layer is formed on the top of the substrate.

14. The method according to claim 11, wherein the sealing structure is glued to the top of the substrate by a roll-press manner.

* * * * *

专利名称(译)	有机电致发光显示器及其密封方法		
公开(公告)号	US20040152390A1	公开(公告)日	2004-08-05
申请号	US10/760862	申请日	2004-01-20
[标]申请(专利权)人(译)	群创光电股份有限公司		
申请(专利权)人(译)	奇美电子股份有限公司		
当前申请(专利权)人(译)	群创光电		
[标]发明人	CHUNG CHIA TIN HUANG HAO JUNG HUANG CHEN WEI		
发明人	CHUNG, CHIA-TIN HUANG, HAO JUNG HUANG, CHEN WEI		
IPC分类号	H01L51/52 H01J9/00		
CPC分类号	H01L2251/5315 H01L51/5237 H01L51/5253 H01L51/5246		
优先权	090125665 2001-10-17 TW		
其他公开文献	US6872114		
外部链接	Espacenet USPTO		

摘要(译)

顶部发光有机电致发光显示器 (OLED) 具有至少具有阳极层, 有机荧光膜, 至少阴极层, 阻挡层和保护层的基板。透明密封结构胶合到基板的顶部。其中, 透明密封结构具有粘贴于保护层的粘合层, 形成于粘合层上的多个有机树脂层, 设置于有机树脂层之间的多个无机阻挡层, 形成于有机树脂层上的柔性聚合物膜层和在柔性聚合物膜上形成的硬涂层。

